



2390 Tactical Flashlight M6™



Bright light. Tough body. The PELICAN™ M6™ 2390 Flashlight uses a 3 watt Cree LED for intense brightness. The strong body is CNC-machined aluminum with knurled grip for a secure handle. Plus, it has a Type III anodized coating for extra protection. The convenient push button tail cap switch has a safety lockout feature to prevent inadvertent battery depletion or accidental activation. The M6™ comes with a free Cordura® holster with back-up battery pouch. 2 CR123 lithium cells are also included.

- Built Pelican tough
- Unconditional Lifetime Guarantee of Excellence
- Type III hard anodized finish
- Stunningly bright 3 watt LED
- Durable 10,000 hour LED lamp module
- Tactical on/off momentary tail switch
- Free holster with back-up battery pouch

CONFIGURATIONS

2390 - Standard

DIMENSIONS

Length: 5.31"

MATERIALS

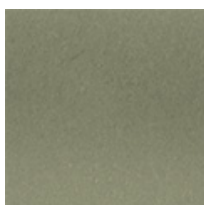
Body: Aluminum

O-Ring: Nitrile

Lens: Polycarbonate (PC)

Contact Spring Retainer: Nickel Plated Spring Steel

COLORS





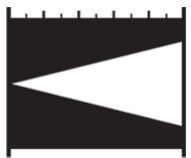


OD Green



Black

LIGHT SPECS

Lamp Type: LED

FL1 STANDARD	HIGH
	177 LUMENS
	2h 30mins
	155m
	6002cd
	IPX4

POWER

Battery Size: CR123
Battery Type: Lithium-Ion
Battery Quantity: 2
Batteries Included: yes
Volts: 6.0v

WEIGHT

Weight With Batteries: 5.6 oz
Weight Without Batteries: 4.4 oz
Packaged Weight: 10.0 oz

SWITCH

Switch Type: Push Button
Light Modes: On / Off

OTHER

Minimum Pack: 6

Military: yes

Package Code: B

Pelican Products, Inc.

23215 Early Ave • Torrance, CA 90505 USA • Phone: (310) 326-4700 • (800) 473-5422 • Fax: (310) 326-3311
sales@pelican.com • www.pelican.com