



## 3330 Tactical Flashlight PM6™



Same as the 3320 Flashlight, but in an LED version. The PM6™ 3330 LED Flashlight is made of light weight Xenoy polymer that's corrosion proof, resistant to extreme temperatures, and extremely strong. It uses a 1 watt LED and is powered by 2 CR123 lithium cells (included). A black oxide coated steel clip is built in and the one-handed tail switch activates the 3330 on, for constant light or momentary blink.

- Built Pelican tough
- Unconditional Lifetime Guarantee of Excellence
- Durable and light weight polymer body
- Sturdy, detachable, magnesium coated clip
- Tactical on/off momentary tail switch
- Super bright 1 watt LED beam

### CONFIGURATIONS

3330 - Standard

### DIMENSIONS

Length: 5.27"

### MATERIALS

**Body:** Xenoy

**O-Ring:** Polymer

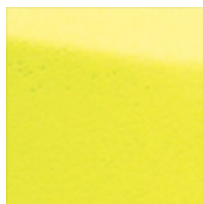
**Lens:** Polycarbonate (PC)

**Shroud:** Xenoy

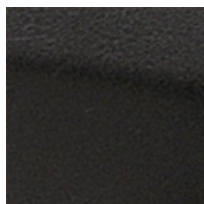
**Clip:** Black Oxide Coated Stainless Steel

**Contact Spring Retainer:** Stainless Steel

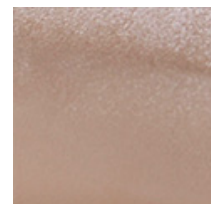
### COLORS



Yellow








Black



Desert Tan

### LIGHT SPECS

Lamp Type: LED

FL1 STANDARD	HIGH
	90 LUMENS
	4h 45mins
	88m
	1959cd
	IPX4

## POWER

**Battery Size:** CR123  
**Battery Type:** Lithium-Ion  
**Battery Quantity:** 2  
**Batteries Included:** yes  
**Volts:** 6.0v

## WEIGHT

**Weight With Batteries:** 3.5 oz  
**Weight Without Batteries:** 2.2 oz  
**Packaged Weight:** 5.9 oz

## SWITCH

**Switch Type:** Push Button  
**Light Modes:** On / Off

## OTHER

**Minimum Pack:** 6  
**Package Code:** C

23215 Early Ave • Torrance, CA 90505 USA • Phone: (310) 326-4700 • (800) 473-5422 • Fax: (310) 326-3311  
[sales@pelican.com](mailto:sales@pelican.com) • [www.pelican.com](http://www.pelican.com)